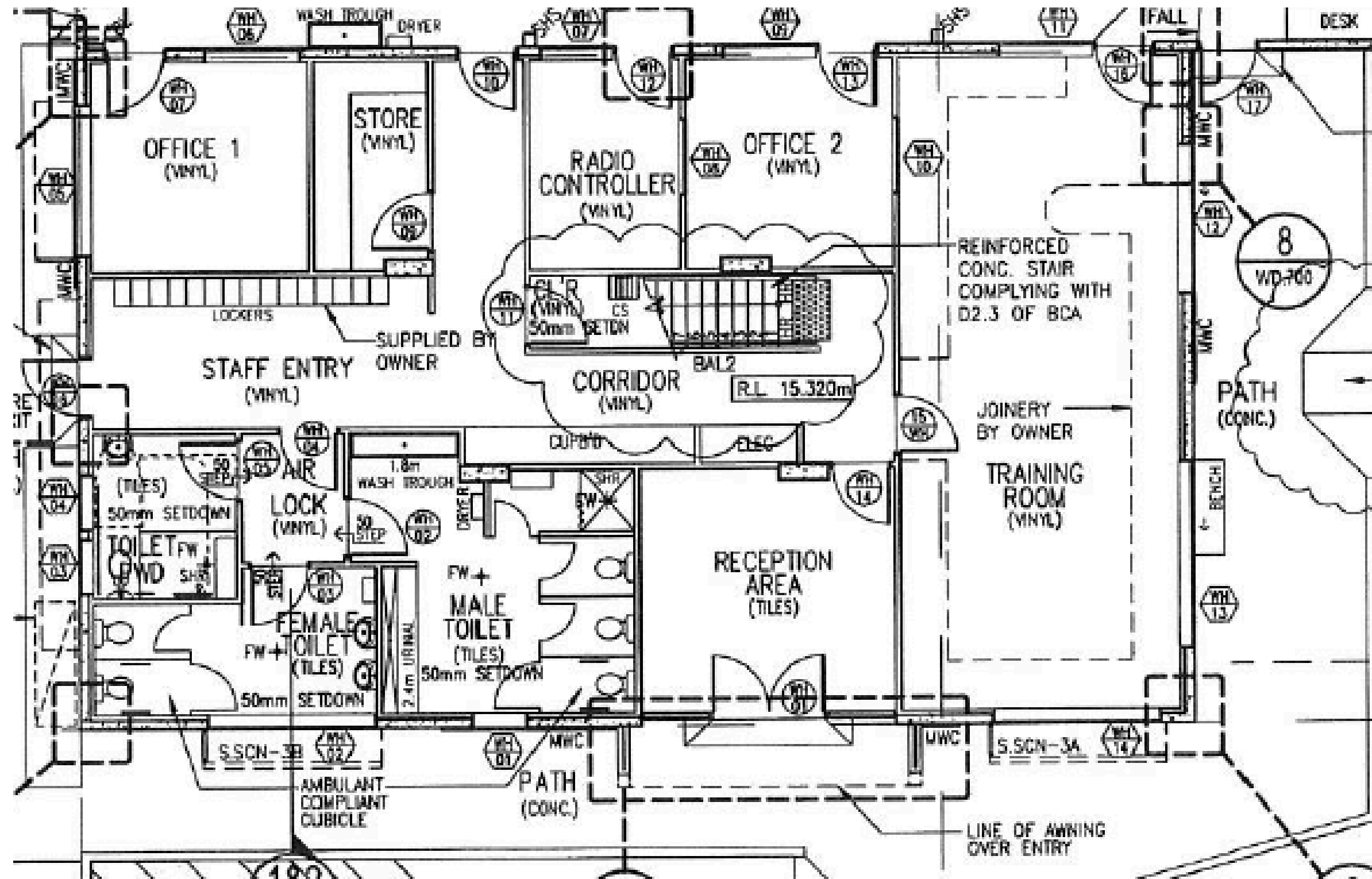
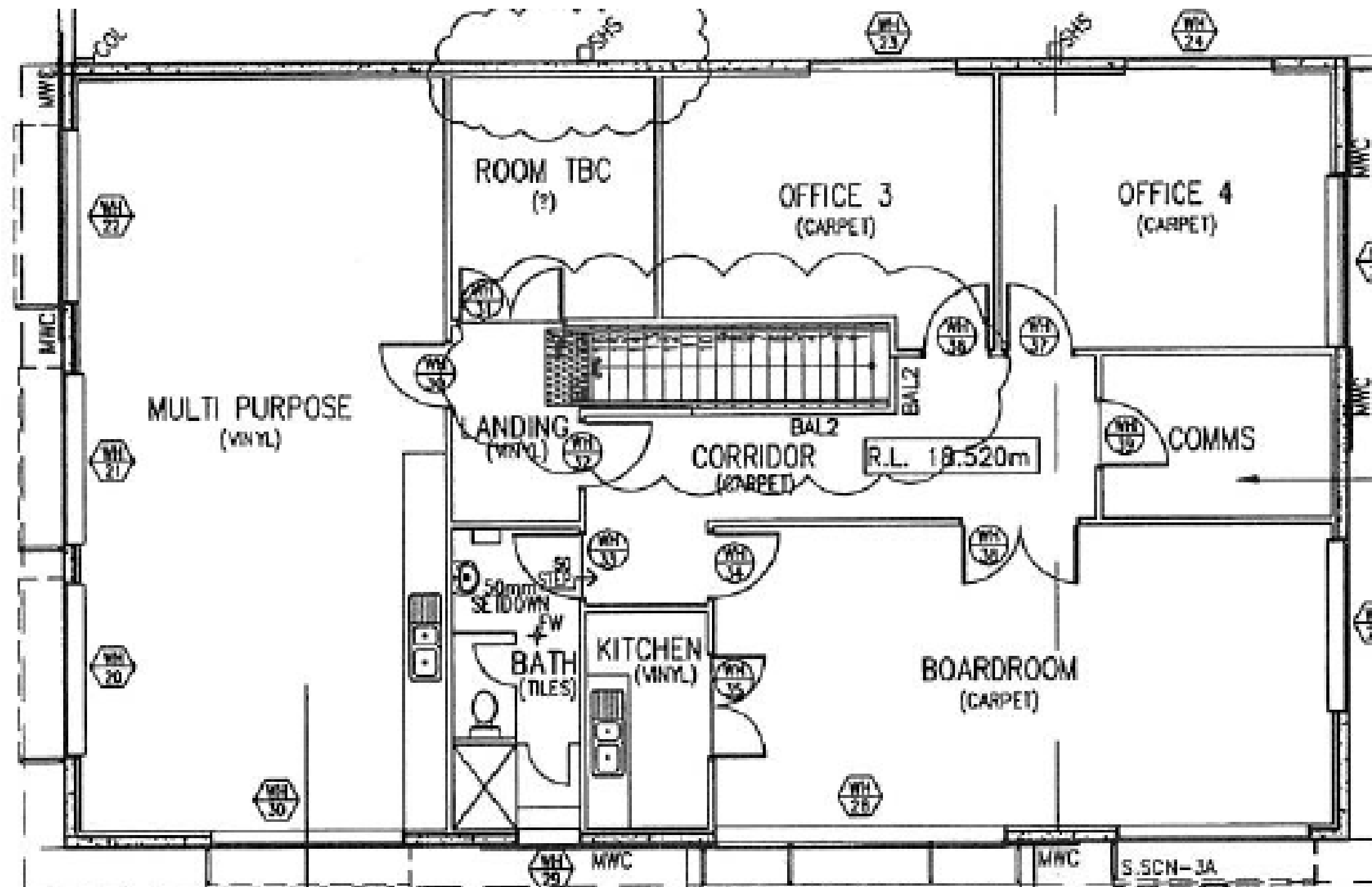


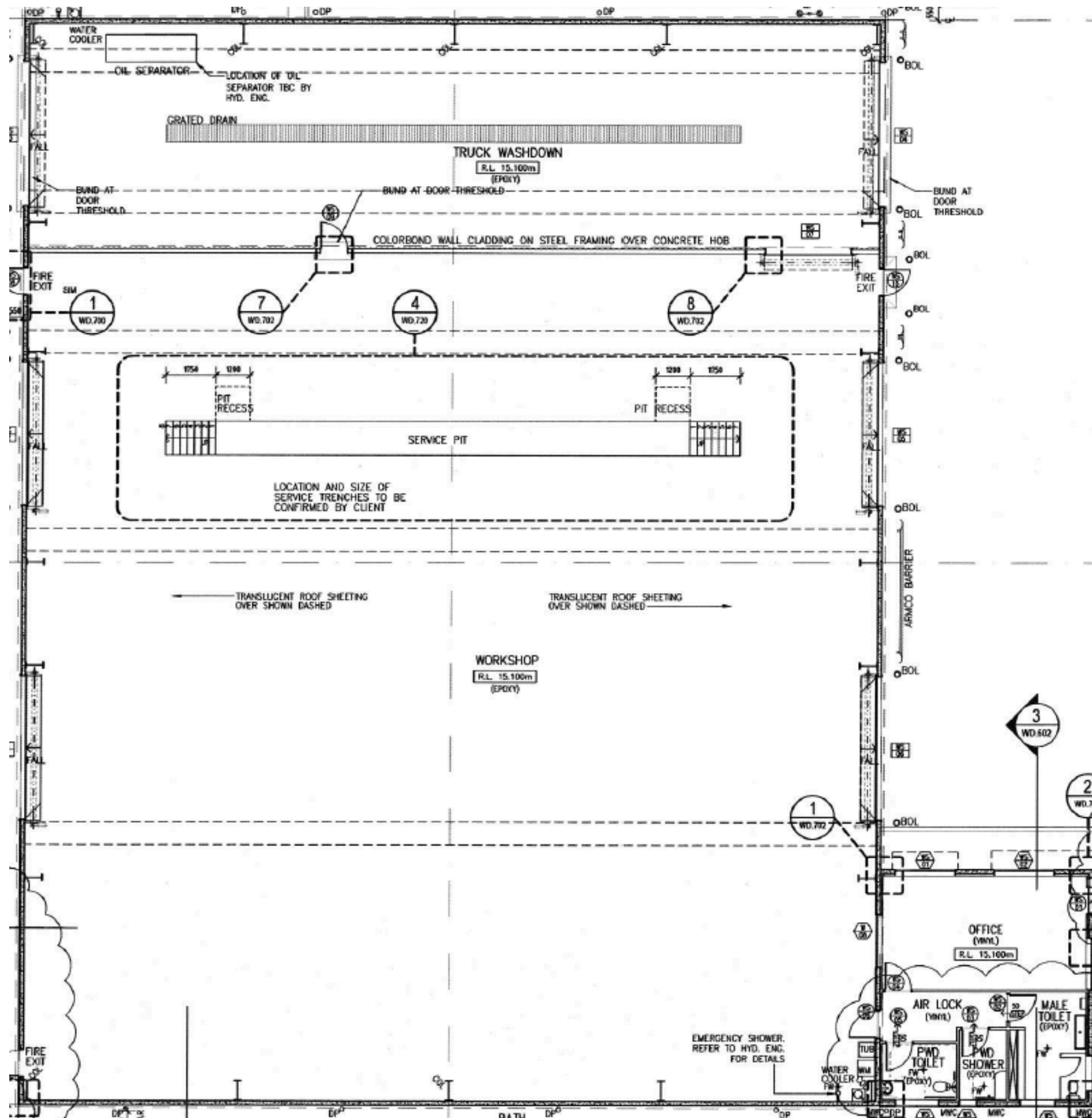
Office First Floor



Office Second Floor



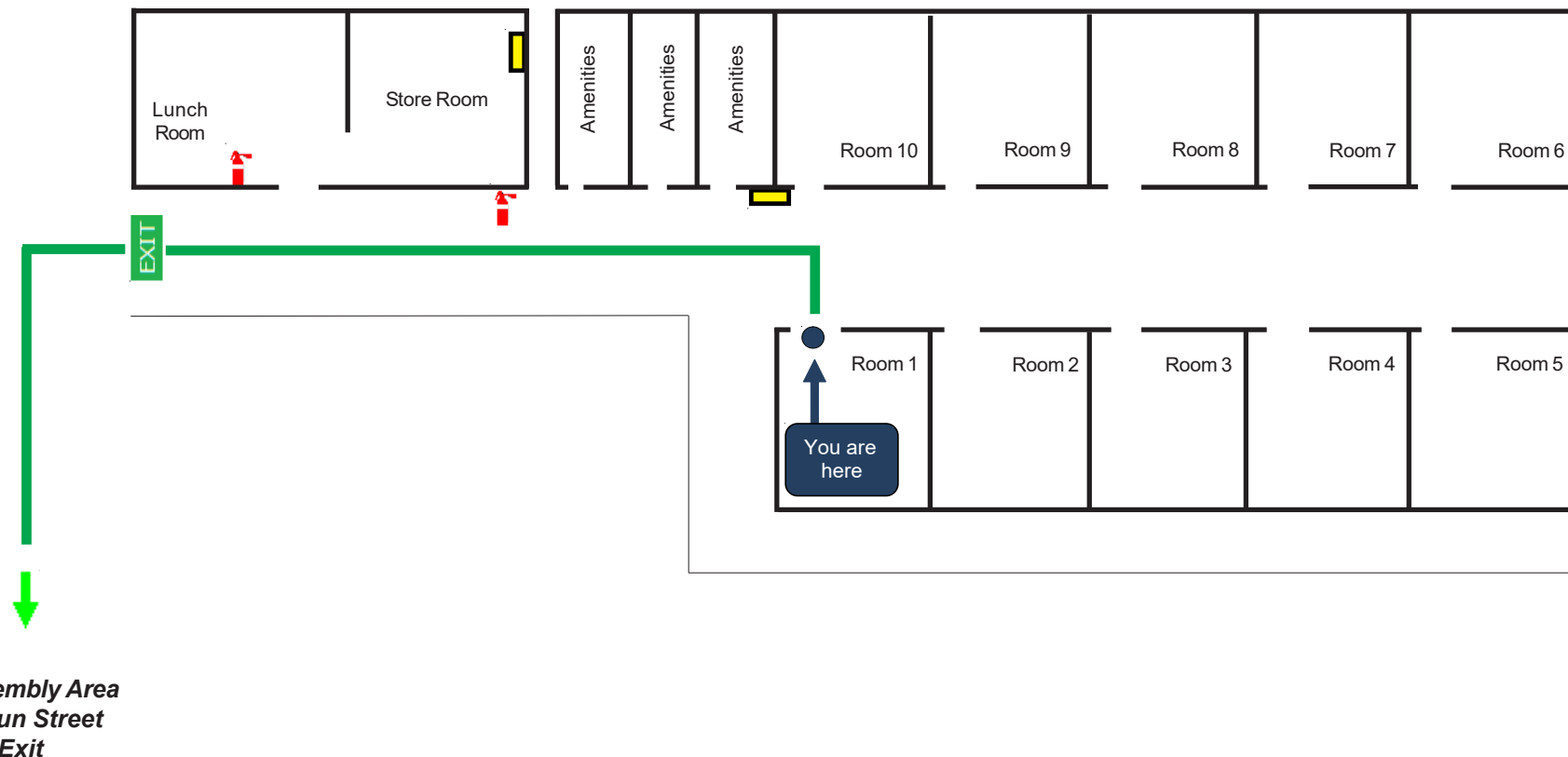
Workshop



EVACUATION DIAGRAM

FOLLOWMONT TRANSPORT

11 Waur Street Kawana QLD 4701



- | | | | | | | | |
|--|------|--|--------------|--|----------------|--|------------------|
| | DCP | | Wet Chemical | | Fire Hose Reel | | Path of Exit |
| | Co2 | | Air Water | | Fire Hydrant | | Main Path |
| | AFFF | | Fire Blanket | | EXIT Sign | | Alternative Path |
| | | | | | | | First Aid Kit |
| | | | | | | | Switch Board |



Mobility impaired persons should evacuate immediately on hearing the fire alarm assisted by a nominated person.



EVACUATION PROCEDURES

Stage 1: Removal of people from the immediate Danger Area
Occupants and staff in the immediate danger area are to assemble a safe distance away from the fire and smoke. When the area has been evacuated all doors and windows should be closed to contain fire.

Stage 2: Removal to a Safe Area
If the severity of the smoke or fire warrants further evacuation, occupants should be moved through fire/smoke doors to a safe area.

Stage 3: Complete Evacuation of Entire Complex
Should the emergency necessitate evacuation of the whole building, the Manager or the Fire Service will direct occupants from the area to the ASSEMBLY POINT AREA

Stage 4: Roll Call
To be conducted as soon as possible and to ensure all persons are accounted for. Report all missing persons to FIRE OFFICERS

R - Remove People
from immediate danger
Do not block exits or exit routes.

A - Alert - Raise alarm
Advise Chief Warden /
Mangement - Dial 000

C - Contain Fire & Smoke
Close doors & windows.
Select & use correct extinguisher

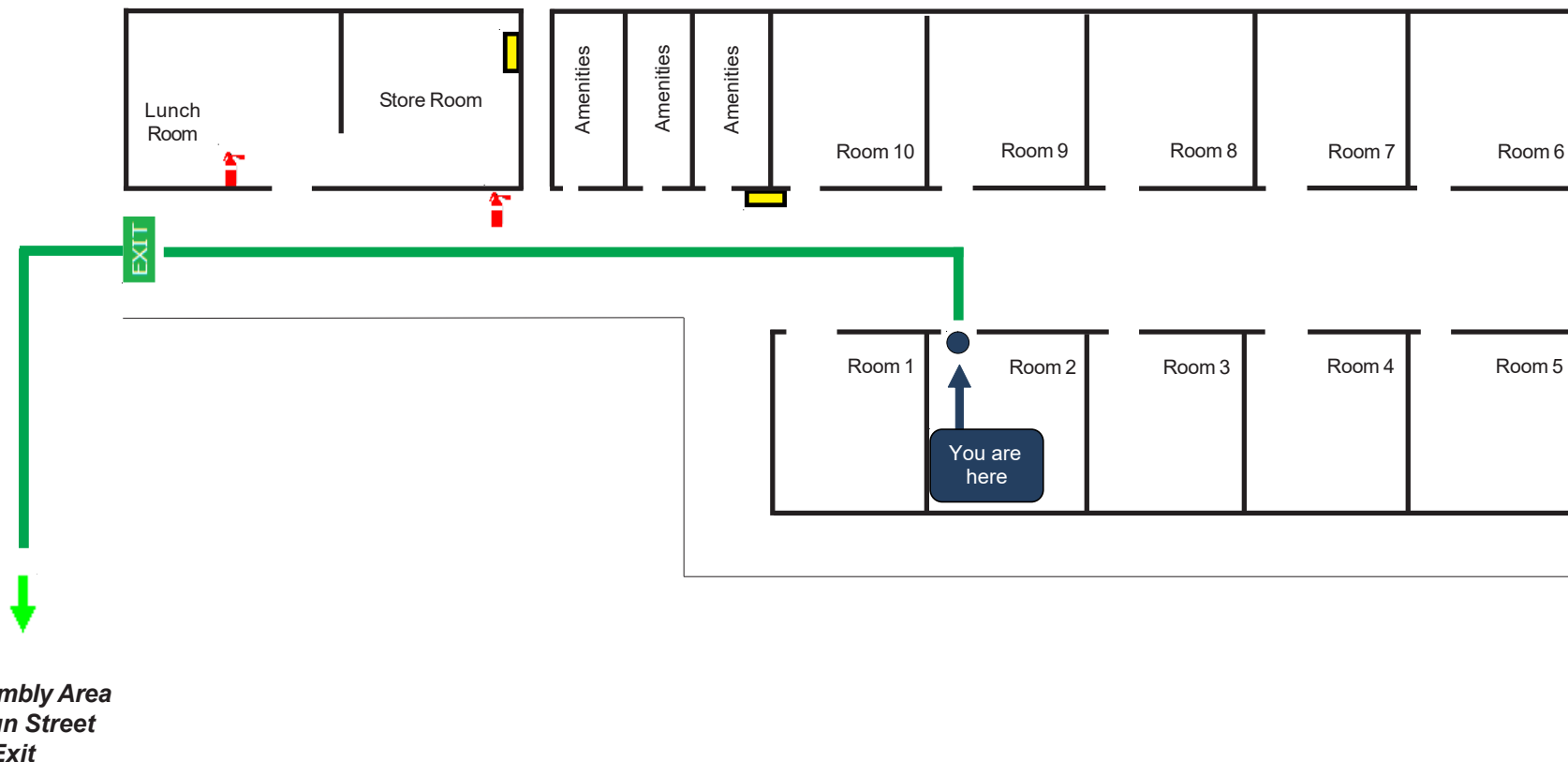
E - Evacuate
Use fire exits - Proceed
to main assembly point



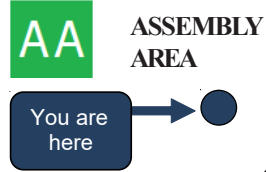
EVACUATION DIAGRAM

FOLLOWMONT TRANSPORT

11 Waur Street Kawana QLD 4701



- | | | | | | | | |
|--|------|--|--------------|--|----------------|--|------------------|
| | DCP | | Wet Chemical | | Fire Hose Reel | | Path of Exit |
| | Co2 | | Air Water | | Fire Hydrant | | Main Path |
| | AFFF | | Fire Blanket | | EXIT Sign | | Alternative Path |
| | | | | | | | First Aid Kit |
| | | | | | | | Switch Board |



Mobility impaired persons should evacuate immediately on hearing the fire alarm assisted by a nominated person.



EVACUATION PROCEDURES

Stage 1: Removal of people from the immediate Danger Area
Occupants and staff in the immediate danger area are to assemble a safe distance away from the fire and smoke. When the area has been evacuated all doors and windows should be closed to contain fire.

Stage 2: Removal to a Safe Area
If the severity of the smoke or fire warrants further evacuation, occupants should be moved through fire/smoke doors to a safe area.

Stage 3: Complete Evacuation of Entire Complex
Should the emergency necessitate evacuation of the whole building, the Manager or the Fire Service will direct occupants from the area to the ASSEMBLY POINT AREA

Stage 4: Roll Call
To be conducted as soon as possible and to ensure all persons are accounted for. Report all missing persons to FIRE OFFICERS

R - Remove People
from immediate danger
Do not block exits or exit routes.

A - Alert - Raise alarm
Advise Chief Warden /
Mangement - Dial 000

C - Contain Fire & Smoke
Close doors & windows.
Select & use correct extinguisher

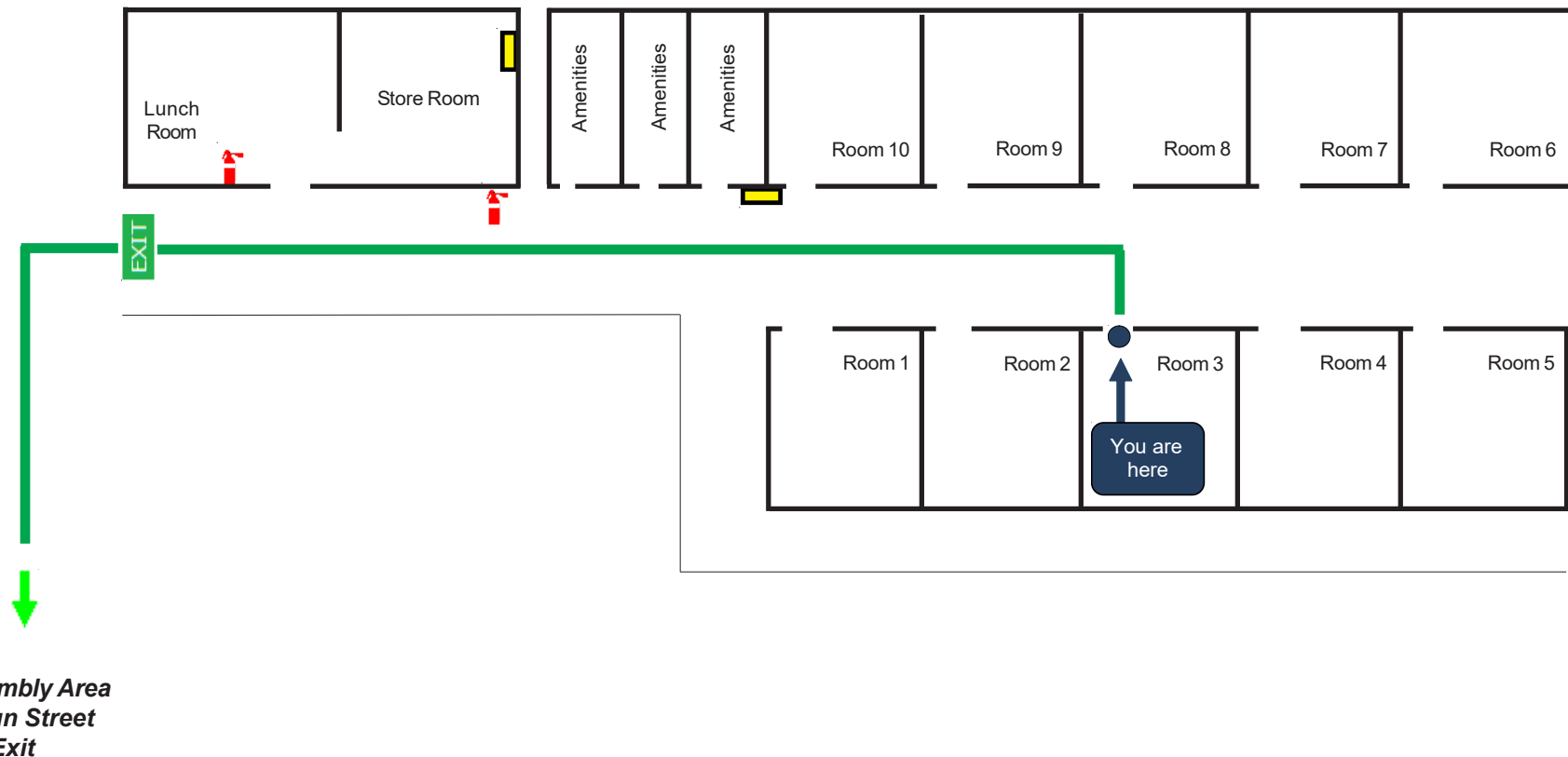
E - Evacuate
Use fire exits - Proceed
to main assembly point



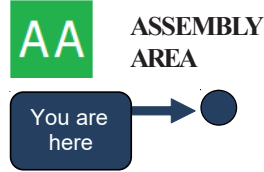
EVACUATION DIAGRAM

FOLLOWMONT TRANSPORT

11 Waur Street Kawana QLD 4701



- | | | | | | | | |
|--|------|--|--------------|--|----------------|--|------------------|
| | DCP | | Wet Chemical | | Fire Hose Reel | | Path of Exit |
| | Co2 | | Air Water | | Fire Hydrant | | Main Path |
| | AFFF | | Fire Blanket | | EXIT Sign | | Alternative Path |
| | | | | | | | First Aid Kit |
| | | | | | | | Switch Board |



Mobility impaired persons should evacuate immediately on hearing the fire alarm assisted by a nominated person.



EVACUATION PROCEDURES

Stage 1: Removal of people from the immediate Danger Area
Occupants and staff in the immediate danger area are to assemble a safe distance away from the fire and smoke. When the area has been evacuated all doors and windows should be closed to contain fire.

Stage 2: Removal to a Safe Area
If the severity of the smoke or fire warrants further evacuation, occupants should be moved through fire/smoke doors to a safe area.

Stage 3: Complete Evacuation of Entire Complex
Should the emergency necessitate evacuation of the whole building, the Manager or the Fire Service will direct occupants from the area to the ASSEMBLY POINT AREA

Stage 4: Roll Call
To be conducted as soon as possible and to ensure all persons are accounted for. Report all missing persons to FIRE OFFICERS

R - Remove People
from immediate danger
Do not block exits or exit routes.

A - Alert - Raise alarm
Advise Chief Warden /
Mangement - Dial 000

C - Contain Fire & Smoke
Close doors & windows.
Select & use correct extinguisher

E - Evacuate
Use fire exits - Proceed
to main assembly point



Date Issued: 21/05/2024

Validation Date: 21/05/2029

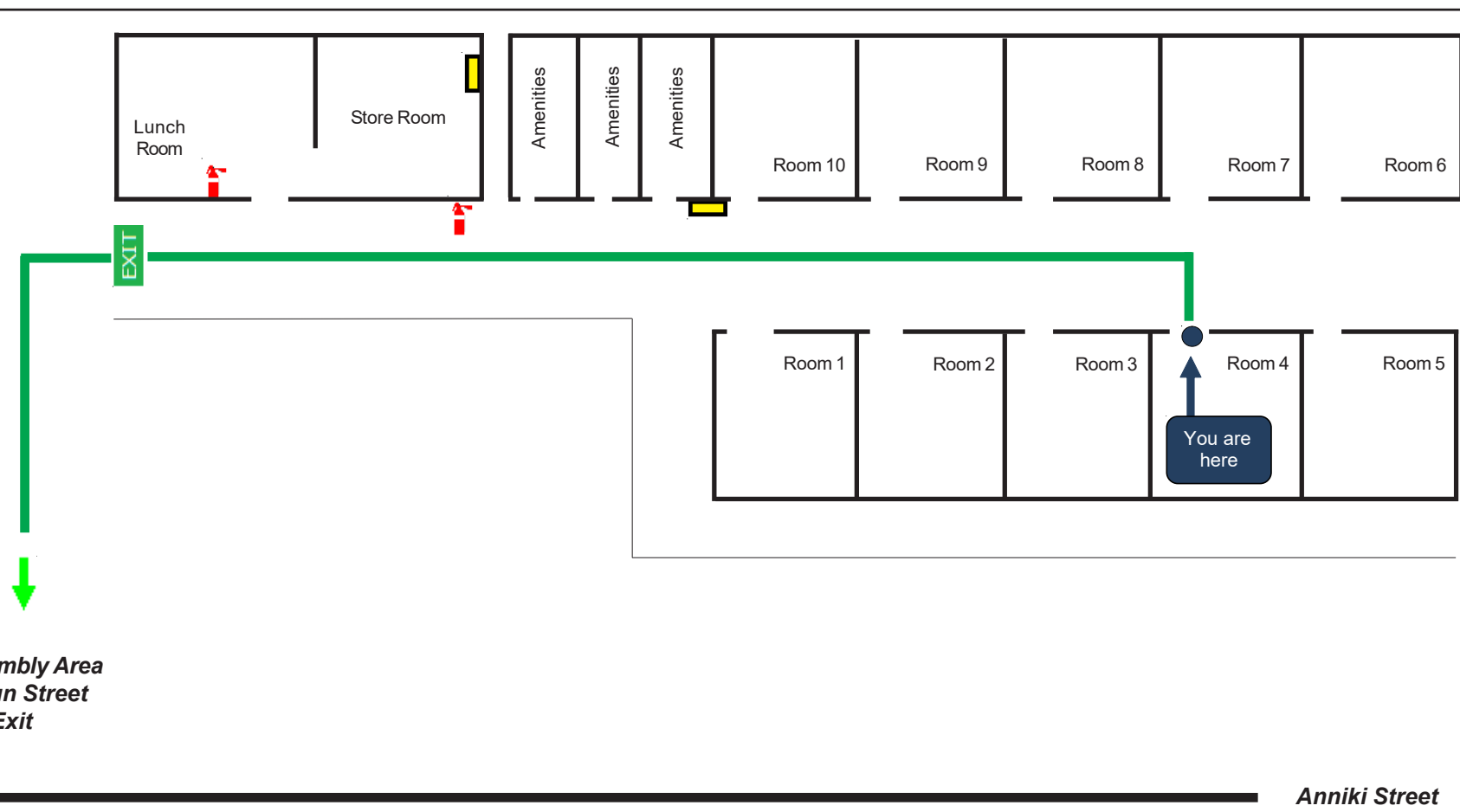
Version 01

Diagram by
Buddy's Fire Sales & Service

EVACUATION DIAGRAM

FOLLOWMONT TRANSPORT

11 Waur Street Kawana QLD 4701



- | | | | |
|------|--------------|----------------|------------------|
| DCP | Wet Chemical | Fire Hose Reel | Path of Exit |
| Co2 | Air Water | Fire Hydrant | Main Path |
| AFFF | Fire Blanket | EXIT Sign | Alternative Path |
| | | | First Aid Kit |
| | | | Switch Board |



Mobility impaired persons should evacuate immediately on hearing the fire alarm assisted by a nominated person.

EVACUATION PROCEDURES

Stage 1: Removal of people from the immediate Danger Area
Occupants and staff in the immediate danger area are to assemble a safe distance away from the fire and smoke. When the area has been evacuated all doors and windows should be closed to contain fire.

Stage 2: Removal to a Safe Area
If the severity of the smoke or fire warrants further evacuation, occupants should be moved through fire/smoke doors to a safe area.

Stage 3: Complete Evacuation of Entire Complex
Should the emergency necessitate evacuation of the whole building, the Manager or the Fire Service will direct occupants from the area to the ASSEMBLY POINT AREA

Stage 4: Roll Call
To be conducted as soon as possible and to ensure all persons are accounted for. Report all missing persons to FIRE OFFICERS

R - Remove People
from immediate danger
Do not block exits or exit routes.

A - Alert - Raise alarm
Advise Chief Warden /
Mangement - Dial 000

C - Contain Fire & Smoke
Close doors & windows.
Select & use correct extinguisher

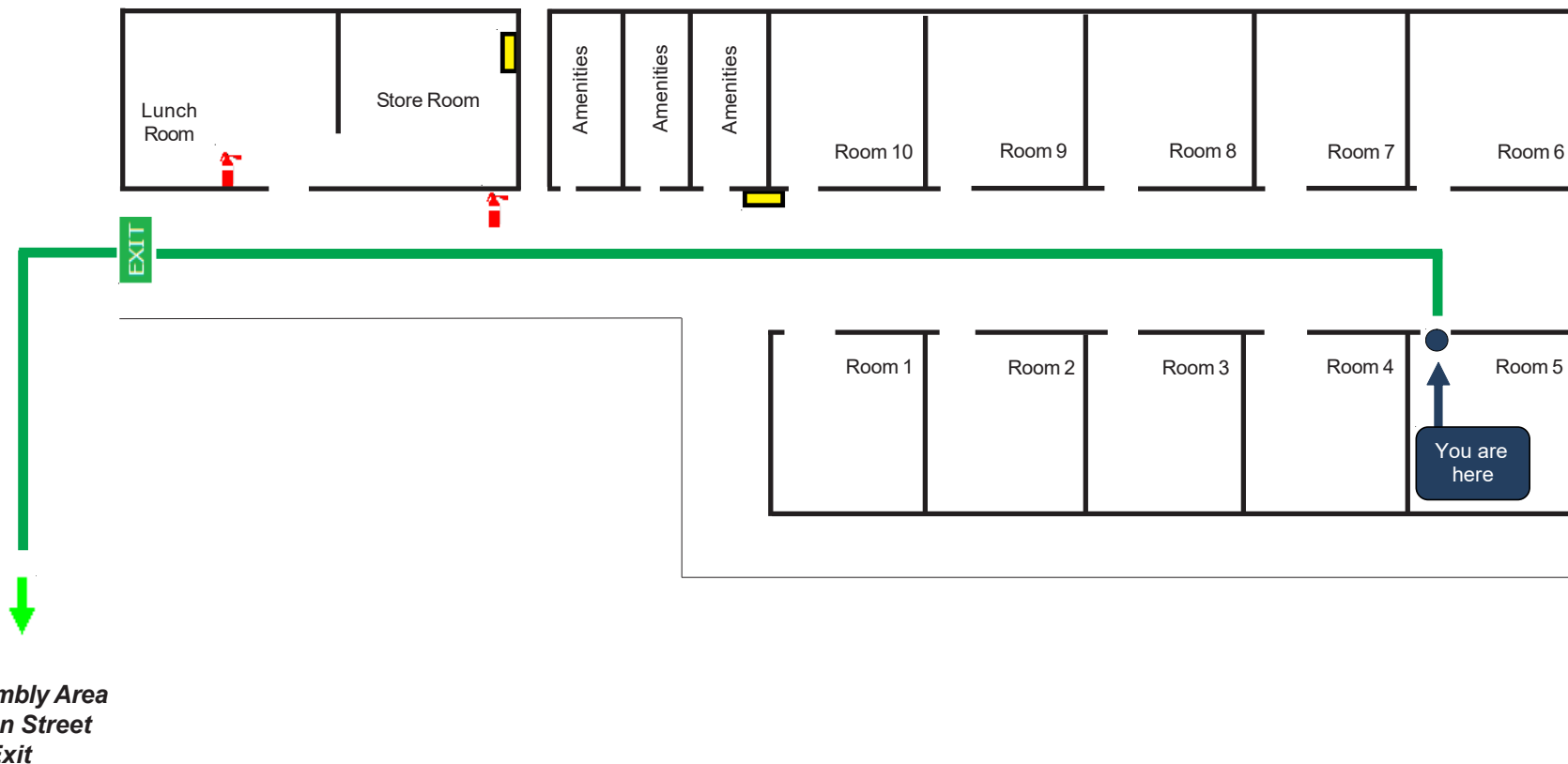
E - Evacuate
Use fire exits - Proceed
to main assembly point



EVACUATION DIAGRAM

FOLLOWMONT TRANSPORT

11 Waur Street Kawana QLD 4701



Mobility impaired persons should evacuate immediately on hearing the fire alarm assisted by a nominated person.



EVACUATION PROCEDURES

Stage 1: Removal of people from the immediate Danger Area
Occupants and staff in the immediate danger area are to assemble a safe distance away from the fire and smoke. When the area has been evacuated all doors and windows should be closed to contain fire.

Stage 2: Removal to a Safe Area
If the severity of the smoke or fire warrants further evacuation, occupants should be moved through fire/smoke doors to a safe area.

Stage 3: Complete Evacuation of Entire Complex
Should the emergency necessitate evacuation of the whole building, the Manager or the Fire Service will direct occupants from the area to the ASSEMBLY POINT AREA

Stage 4: Roll Call
To be conducted as soon as possible and to ensure all persons are accounted for. Report all missing persons to FIRE OFFICERS

R - Remove People
from immediate danger
Do not block exits or exit routes.

A - Alert - Raise alarm
Advise Chief Warden /
Mangement - Dial 000

C - Contain Fire & Smoke
Close doors & windows.
Select & use correct extinguisher

E - Evacuate
Use fire exits - Proceed
to main assembly point



Date Issued: 21/05/2024

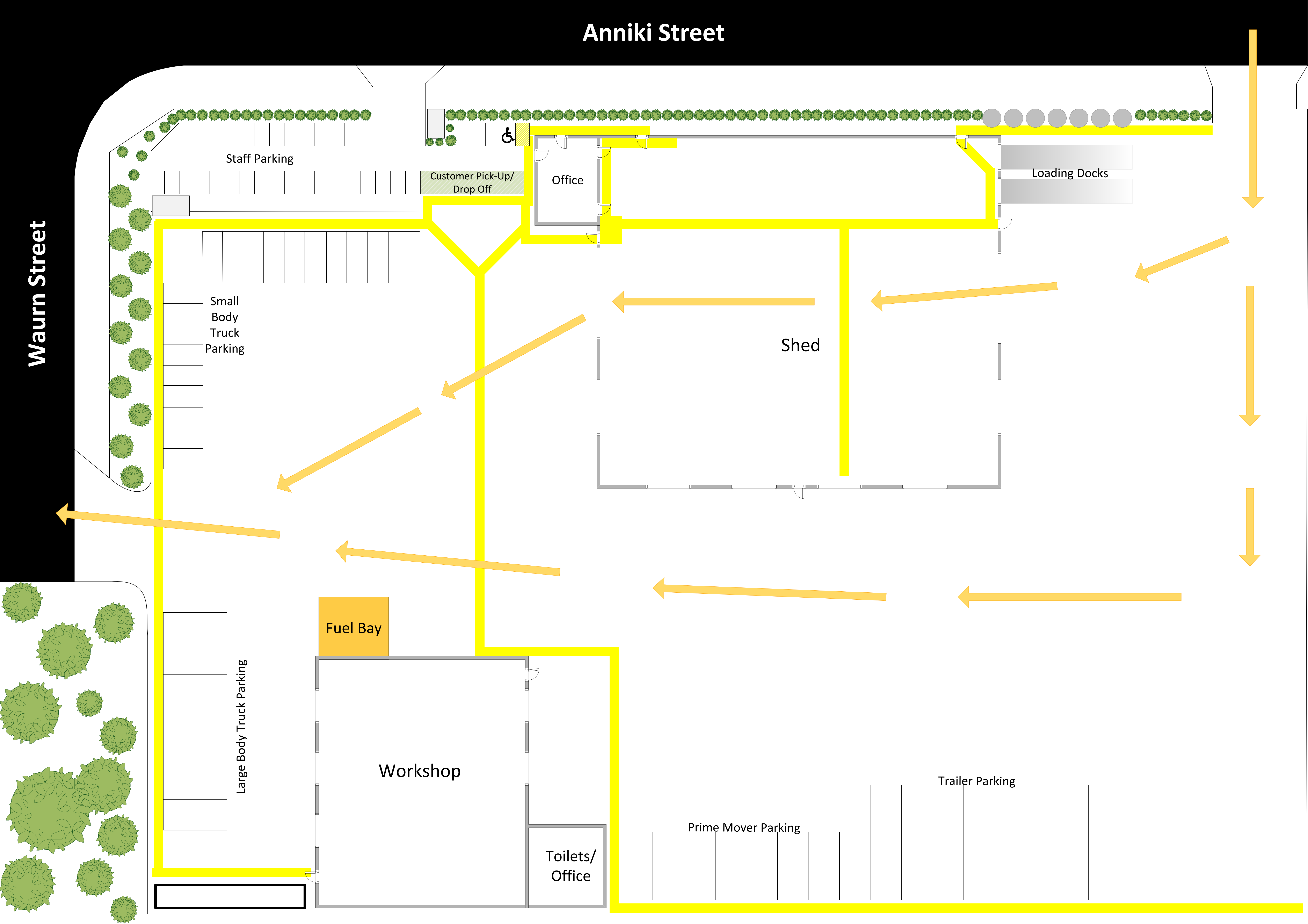
Validation Date: 21/05/2029

Version 01

Diagram by
Buddy's Fire Sales & Service

Anniki Street

Waur Street



Staff Parking

Customer Pick-Up/
Drop Off

Office

Loading Docks

Small
Body
Truck
Parking

Shed

Fuel Bay

Workshop

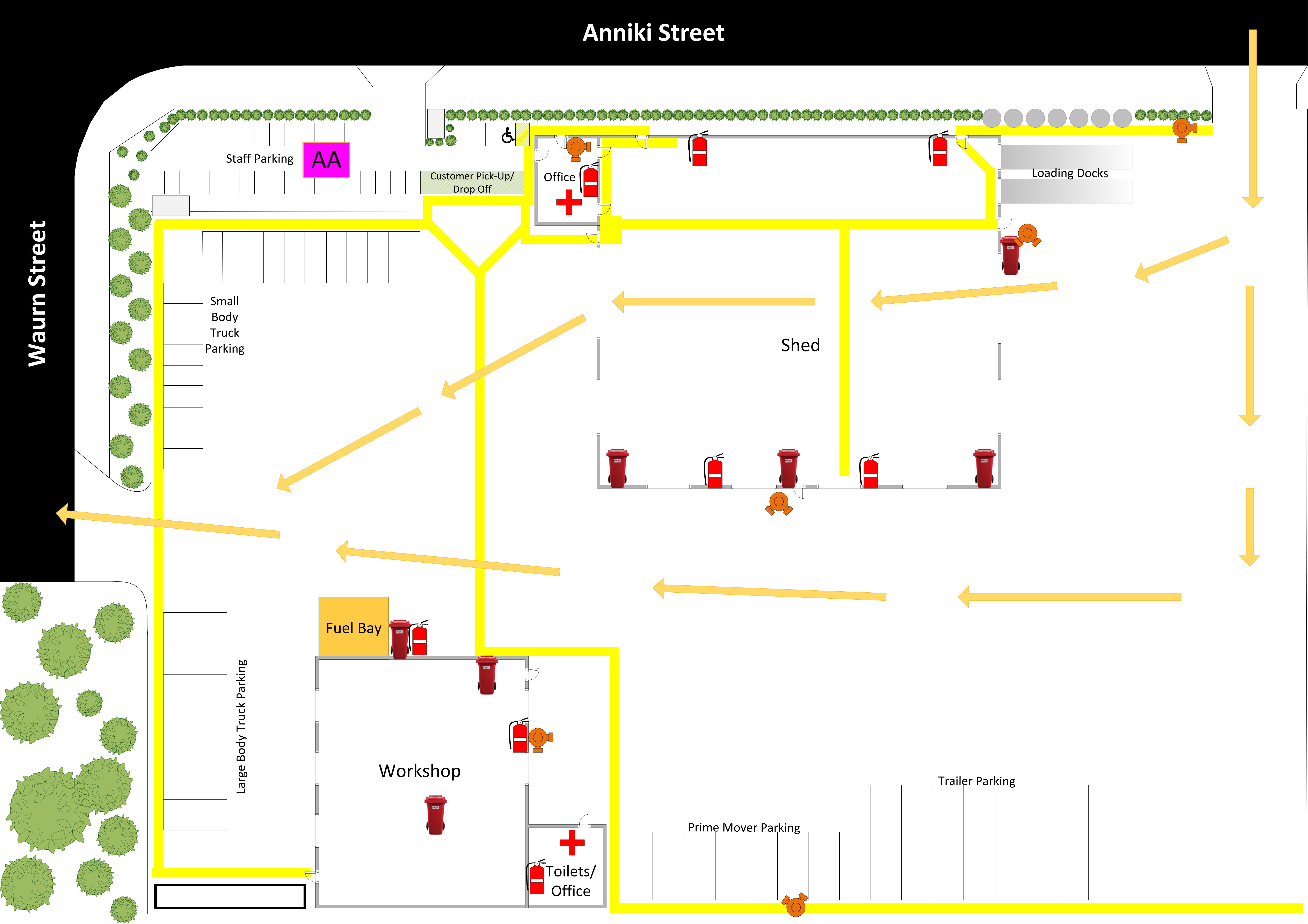
Toilets/
Office

Prime Mover Parking

Trailer Parking

Anniki Street

Waur Street





Waurn Street

Shed

Fuel Bay

Workshop

Toilets/Office

Large Body Truck Parking

Anniki Street

Waur Street

