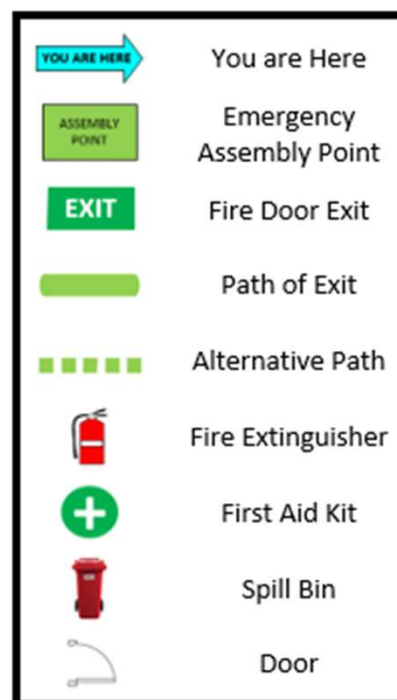


FOLLOWMONT TRANSPORT CENTRAL COAST EVACUATION PLAN

5 Blade Close, Berkley Vale, NSW 2261



IN CASE OF A FIRE

REMOVE PEOPLE

From immediate danger

ALERT THE FIRE SERVICE

Break manual call point
Or call 000

CONFINE FIRE & SMOKE

Close doors and windows
(if safe to do so)

EVACUATE

To the assembly area

Ensure all mobility impaired persons
are assisted with immediately to
Emergency Assembly Area



VALID FROM: 23/01/2023
TMP_CNTC_EVAC_01

FOLLOWMONT TRANSPORT CENTRAL COAST EVACUATION PLAN

5 Blade Close, Berkley Vale, NSW 2261

IN CASE OF A FIRE

REMOVE PEOPLE

From immediate danger

ALERT THE FIRE SERVICE

Break manual call point
Or call 000

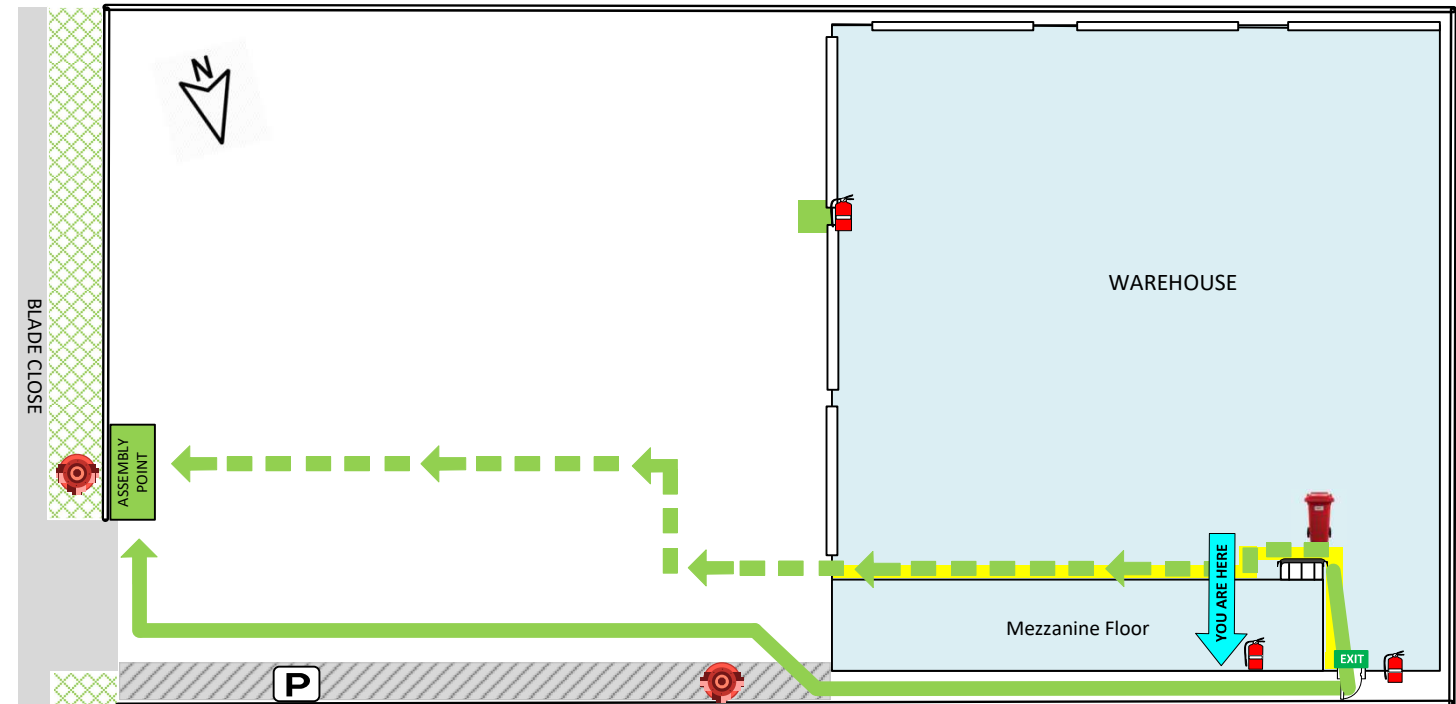
CONFINE FIRE & SMOKE

Close doors and windows
(if safe to do so)

EVACUATE

To the assembly area

Ensure all mobility impaired persons
are assisted with immediately to
Emergency Assembly Area



	You are Here		Emergency Assembly Point		Fire Door Exit
	Path of Exit		Alternative Path		Fire Extinguisher
	Fire Hose Reel		Fire Hydrant		Fire Blanket
	Spill Bin		Warden Station		First Aid Kit
	Spill Control Station		Door		

FOLLOWMONT TRANSPORT CENTRAL COAST EVACUATION PLAN



5 Blade Close, Berkley Vale, NSW 2261

IN CASE OF A FIRE

REMOVE PEOPLE

From immediate danger

ALERT THE FIRE SERVICE

Break manual call point

Or call 000

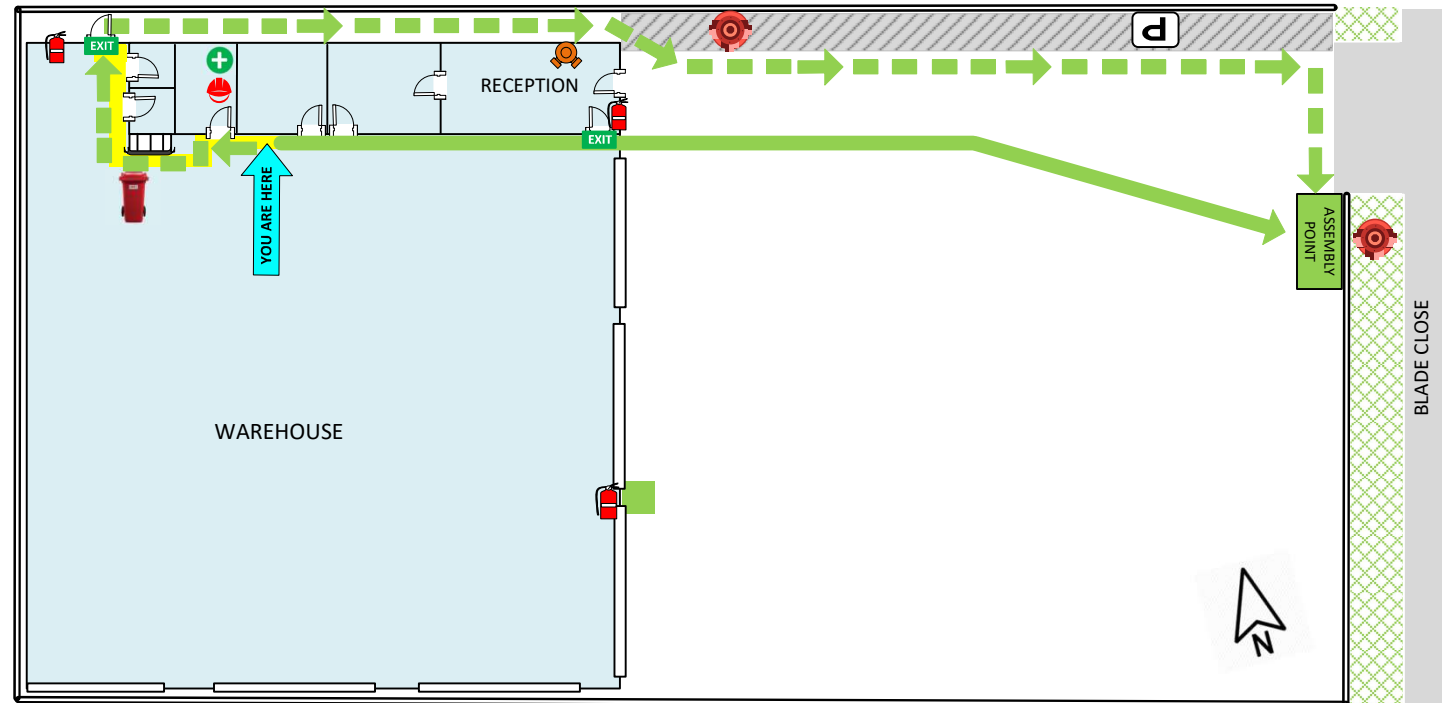
CONFINE FIRE & SMOKE

Close doors and windows
(if safe to do so)

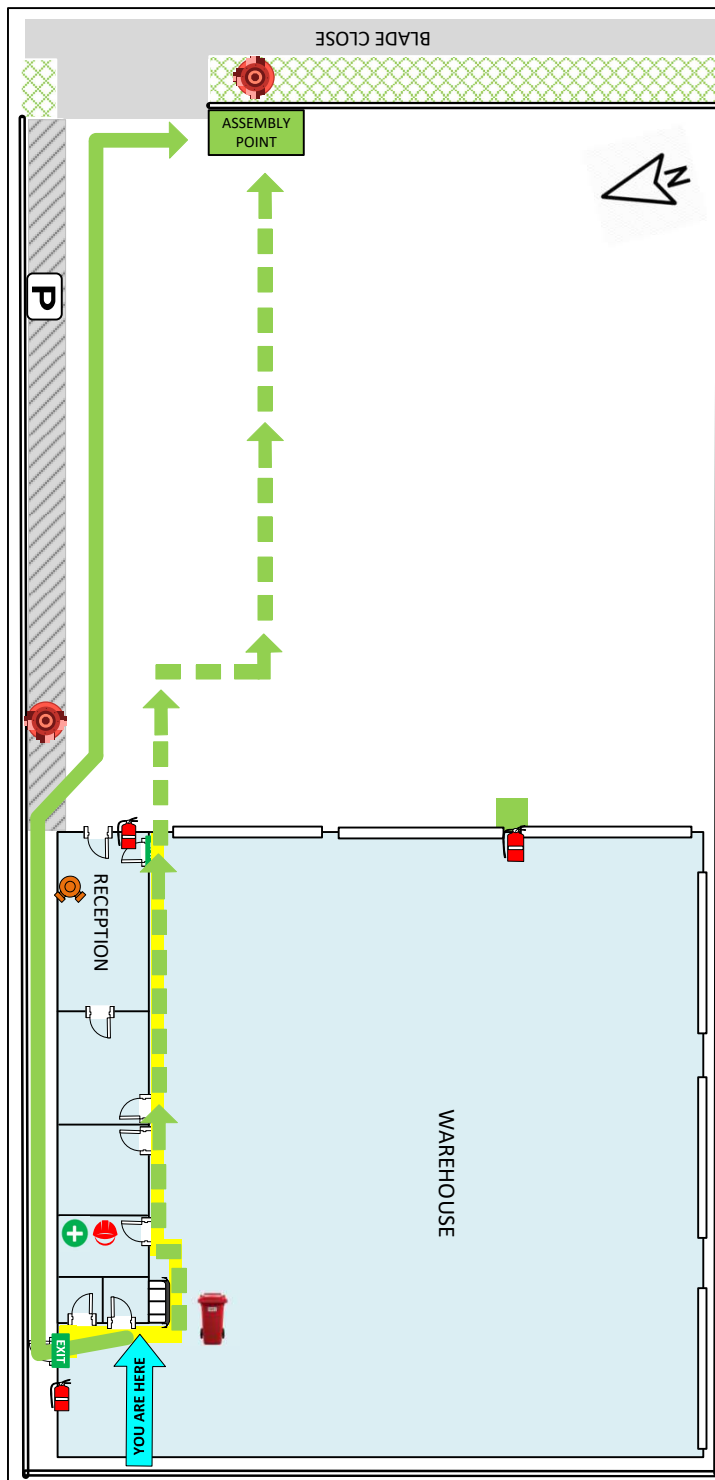
EVACUATE

To the assembly area

Ensure all mobility impaired persons
are assisted with immediately to
Emergency Assembly Area



	You are Here		Emergency Assembly Point		Fire Door Exit
	Path of Exit		Alternative Path		Fire Extinguisher
	Fire Hose Reel		Fire Hydrant		Fire Blanket
	Spill Bin		Warden Station		First Aid Kit
	Spill Control Station		Door		



FOLLOWMONT TRANSPORT CENTRAL COAST EVACUATION PLAN

5 Blade Close, Berkley Vale, NSW 2261



	You are Here
	Emergency Assembly Point
	Fire Door Exit
	Path of Exit
	Alternative Path
	Fire Extinguisher
	First Aid Kit
	Spill Bin
	Door

IN CASE OF A FIRE

REMOVE PEOPLE

From immediate danger

ALERT THE FIRE SERVICE

Break manual call point
Or call 000

CONFINE FIRE & SMOKE

Close doors and windows
(if safe to do so)

EVACUATE

To the assembly area

Ensure all mobility impaired persons
are assisted with immediately to
Emergency Assembly Area

000
EMERGENCY

In an emergency dial 000